



Nissan Navara NP300 + Patrol Y62 S5
CAMERA RELOCATION KIT
Suits Stealth Hoop and Rally Hoop ONLY

IMPORTANT! – READ BEFORE INSTALLATION

- This product must be installed exactly as per these instructions using only hardware supplied.
- Take a few moments to read instructions thoroughly before beginning work.
- In the event of damage to any bar component please contact OFFROAD ANIMAL to arrange repair/replacement of components.
- The installation of this product is recommended for trained personnel.
- These instructions are correct at time of publication. OFFROAD ANIMAL cannot be held responsible for the impact of any changes subsequently made by the vehicle manufacturer. If you find something has changed, please contact us to let us know!
- During installation it is the duty of the installer to check correct operation/clearances of all components.
- If Instructions are to be printed for reference in the workshop, it is recommended that they are printed in colour, for best legibility.
- **Approx. Install Time 15 minutes**

GENERAL CARE AND MAINTENANCE

Only wash the product with a PH neutral car wash to prevent paint damage and discolouration.

Plastic parts may be maintained with silicone spray.

Do not use acidic or alkaline based cleaning products.

It is important to perform regular checks (pre trip or on an annual basis) on the installed product. Checks include:

- Visual inspection for damage (eg. cracks, chips, dents etc.)
- Electrical wiring is not rubbing anything or worn out
- Bolts are torqued to correct specification (see torque guide below)

For touching up small stone chips, Offroad Animal recommends the following paint products:

- Dupli-Color Trim & Bumper Paint Black (TB101)
- VHT Hood, Bumper & Trim Paint Black (SP27)

BOLT TORQUE SETTINGS

Use the following bolt torques on all general fasteners, unless otherwise specified.

GENERAL FASTENERS	
Size	Torque Nm
M5	5 Nm
M6	9 Nm
M8	22 Nm
M10	44 Nm
M12	77 Nm

Use the following bolt torques on all structural front bar mount and tow point fasteners, and rear towbar fasteners, unless otherwise specified.

FRONT BAR MOUNTS AND TOW POINTS + REAR TOWBAR	
Size	Torque Nm
M10	57 Nm
M12	100 Nm
M14	164 Nm
M16	248 Nm

Always use a torque wrench to set correct torque settings. Ensure torque wrench is set to Nm unit of measurement. Otherwise perform conversion to lb-ft.

TOOLS REQUIRED

The following tools will be required to install the product.

Hand Tools	Power Tools	Workshop Equipment
Hex (Allen) Key 4mm Flat Blade Screwdriver or Trim Tool Phillips head screwdriver	N/A	Automotive electrical wire (optional) Solder (optional) Soldering iron (optional) Electrical tape (optional) Heatshrink (optional) Heat gun (optional)

WORKSHOP SAFETY

It is the responsibility of the installer to always complete works in a safe manner. Make sure the following safety equipment is available and precautions are observed whilst fitting this product.

<p>Hearing Protection</p> 	<p>Always wear ear protection when using power tools.</p>
<p>Eye Protection</p> 	<p>Ensure eye protection is always worn when cutting or drilling.</p>
<p>Manual Handling</p> 	<p>Do not attempt to lift bar assemblies or rock sliders on your own.</p> <p>Always use two people to lift or use mechanical Lifting aid such as hydraulic lifting trolley.</p>
<p>Vehicle Support</p> 	<p>Always ensure vehicle is properly supported when working on it. Do not attempt to fit products whilst suspension work is being carried out. Do not work under a vehicle supported only by a jack.</p>

**NOTE:**

This product only suits Nissan Navara NP300 or Nissan Patrol Y62 Series 5.

Camera relocation only suits Offroad Animal Predator/Cobra bars fitted with a 22" Stealth Hoop or Rally Hoop. This does not suit Toro bars or Predator bars without top hoops.

The bull bar may need to be off the vehicle in order to remove the grille and access the camera.

1. Remove the grille.
2. Disconnect and remove the camera assembly from the grille.

TOOLS REQUIRED

Phillips head screwdriver

FASTENERS



3. Unclip the camera harness from the mounting bracket.
4. Disconnect the camera harness from the camera body by removing 2x Phillips head screws. Retain for later.

TOOLS REQUIRED

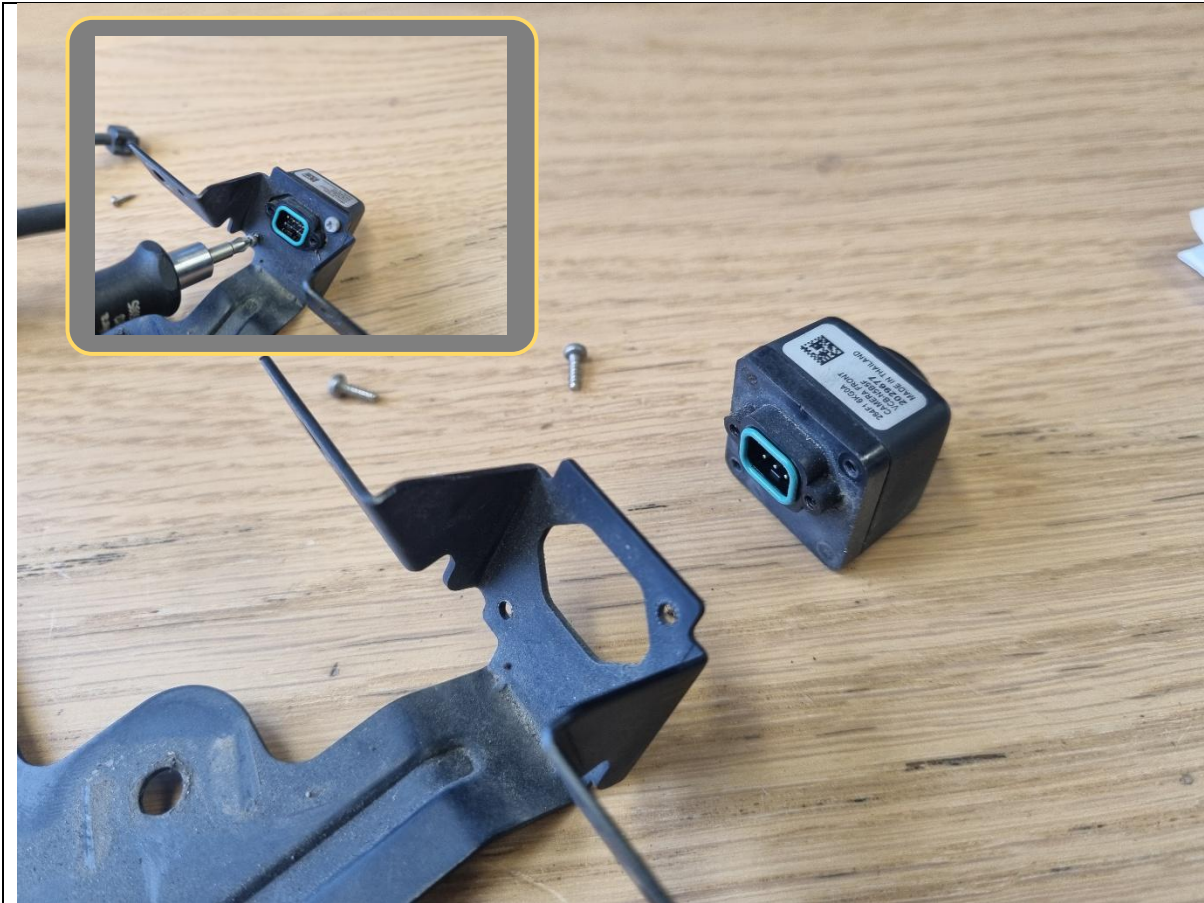
Flat Blade Screwdriver
Or
Trim Tool

Phillips head screwdriver

FASTENERS

2x Phillips head screws

Retain for Reassembly



5. Take note of the camera orientation (ie. which way is up) before next step.
6. Remove the camera body from the mounting bracket by removing 2x Phillips head screws. Retain for later.

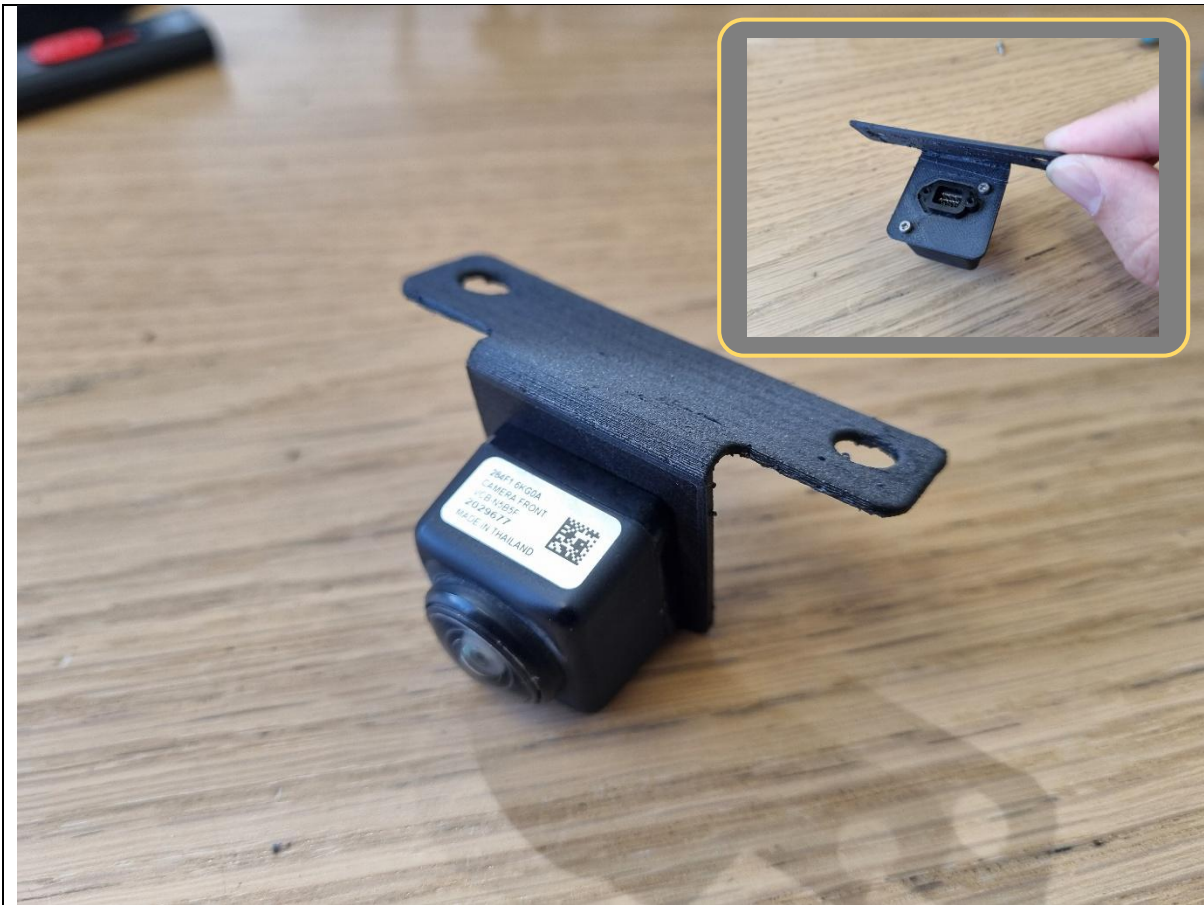
TOOLS REQUIRED

Phillips head screwdriver

FASTENERS

2x Phillips head screws

Retain for Reassembly



7. Fit the camera body to the supplied B-1467 relocation bracket, and secure using the 2x factory Phillips head screws from the previous step.

TOOLS REQUIRED

Phillips head screwdriver

FASTENERS

2x Phillips head screws



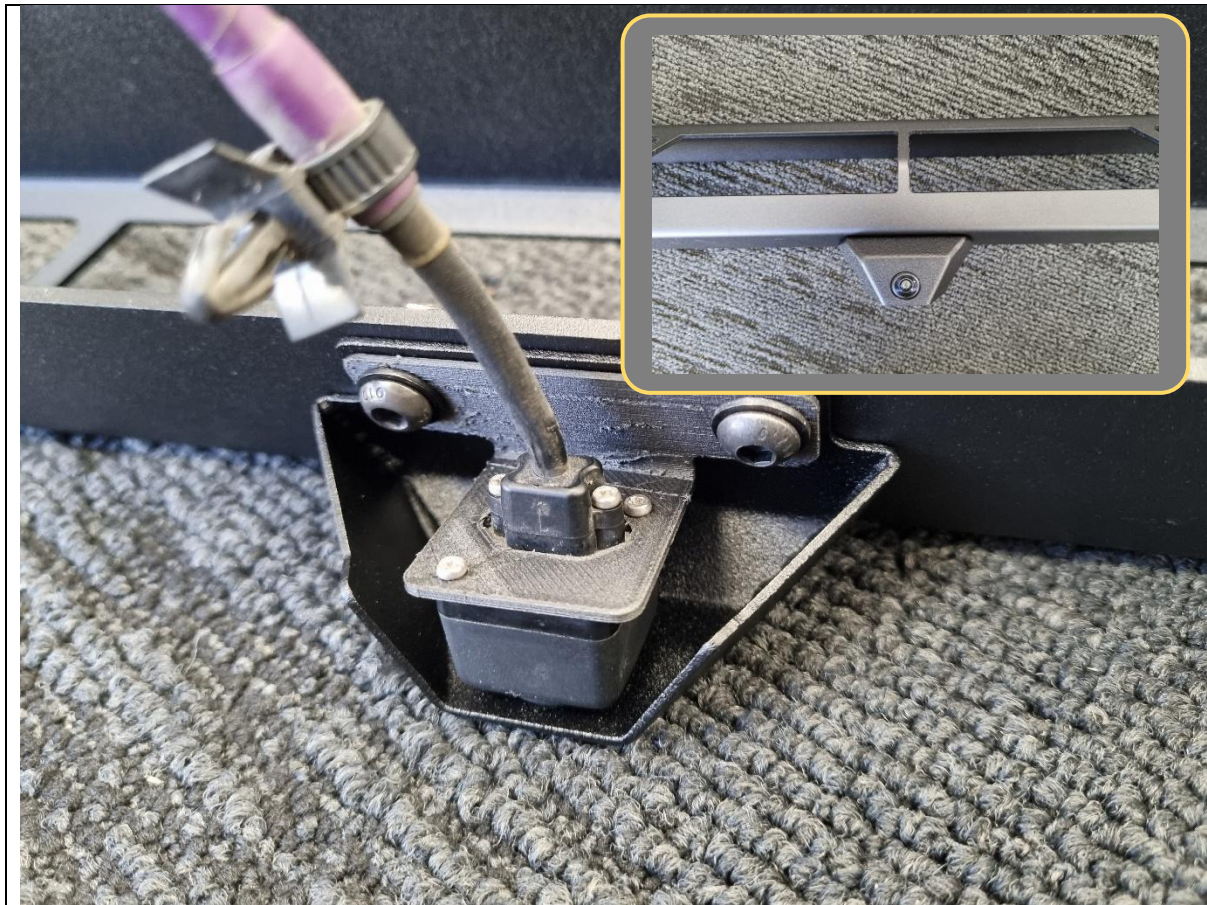
8. Re-connect the camera harness to the camera using the 2x factory Phillips head screws from previous.

TOOLS REQUIRED

Phillips head screwdriver

FASTENERS

2x Phillips head screws



9. Place the camera + relocation bracket on the inside of the supplied B-1264 camera cover bracket, then fit both to the underside of the Stealth Hoop or Rally Hoop.
10. Secure both the camera and housing to the Stealth Hoop or Rally Hoop using the supplied M6x16 black button head bolts, black washers and flange nuts.

TOOLS REQUIRED

4mm hex/Allen key

FASTENERS

2x M6x16 black button head
2x M6 black flat washer
2x M6 flange nut



11. Fit the top hoop with camera onto the bull bar and reconnect the camera harness once everything is fitted to the vehicle.
12. If the camera harness is not long enough, you may need to extend the wires in the camera harness (equipment not supplied).
13. And you're done!

TOOLS REQUIRED**FASTENERS**